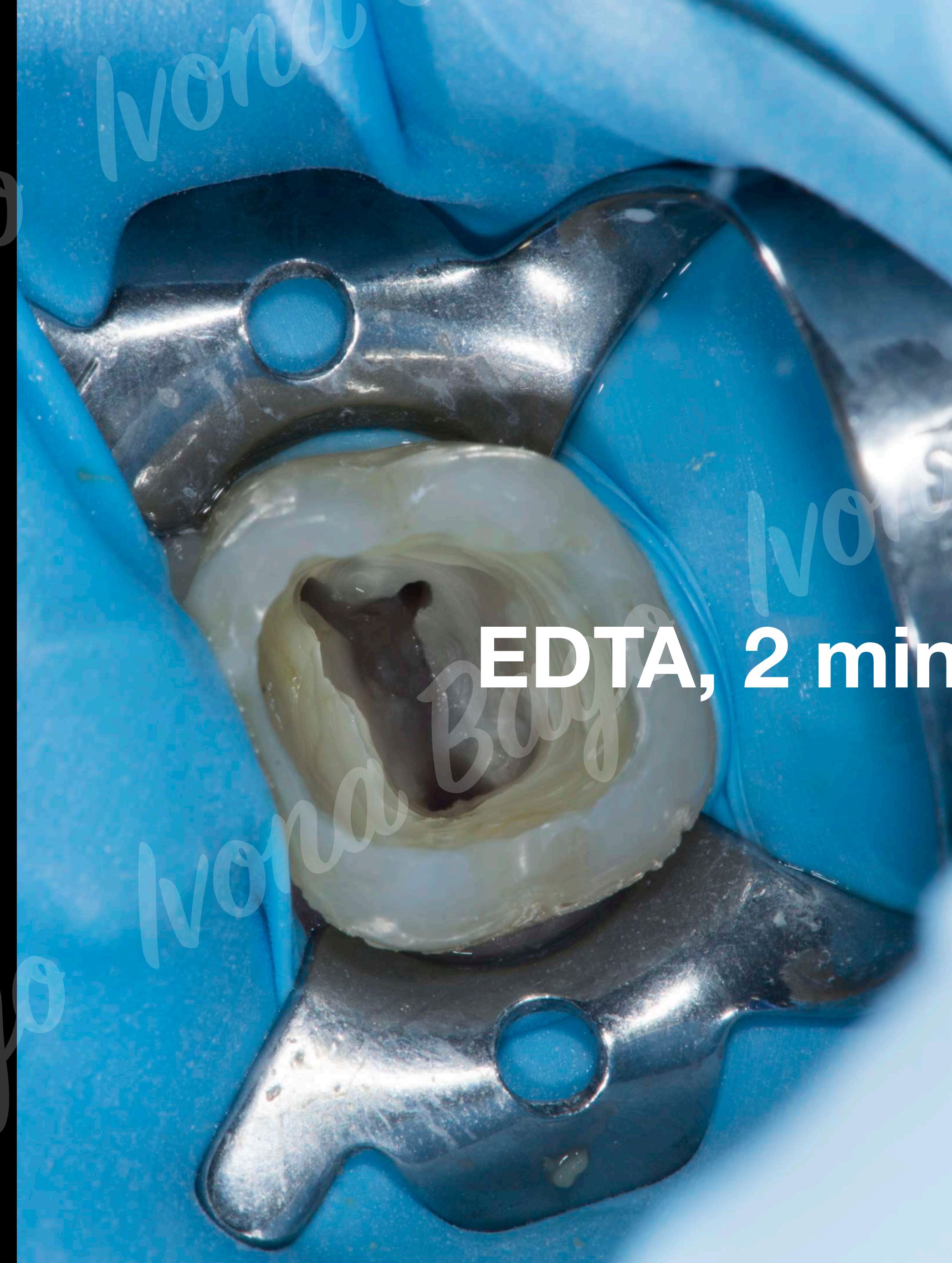


PRIMJENA  
Er:YAG LASERA  
u  
ENDODONTSKOM LIJEČENJU

izv.prof.dr.sc. Ivona Bago

Ivona Bago

Primjena SWEEPS tehnike kod kalcificiranih korijenskih kanala



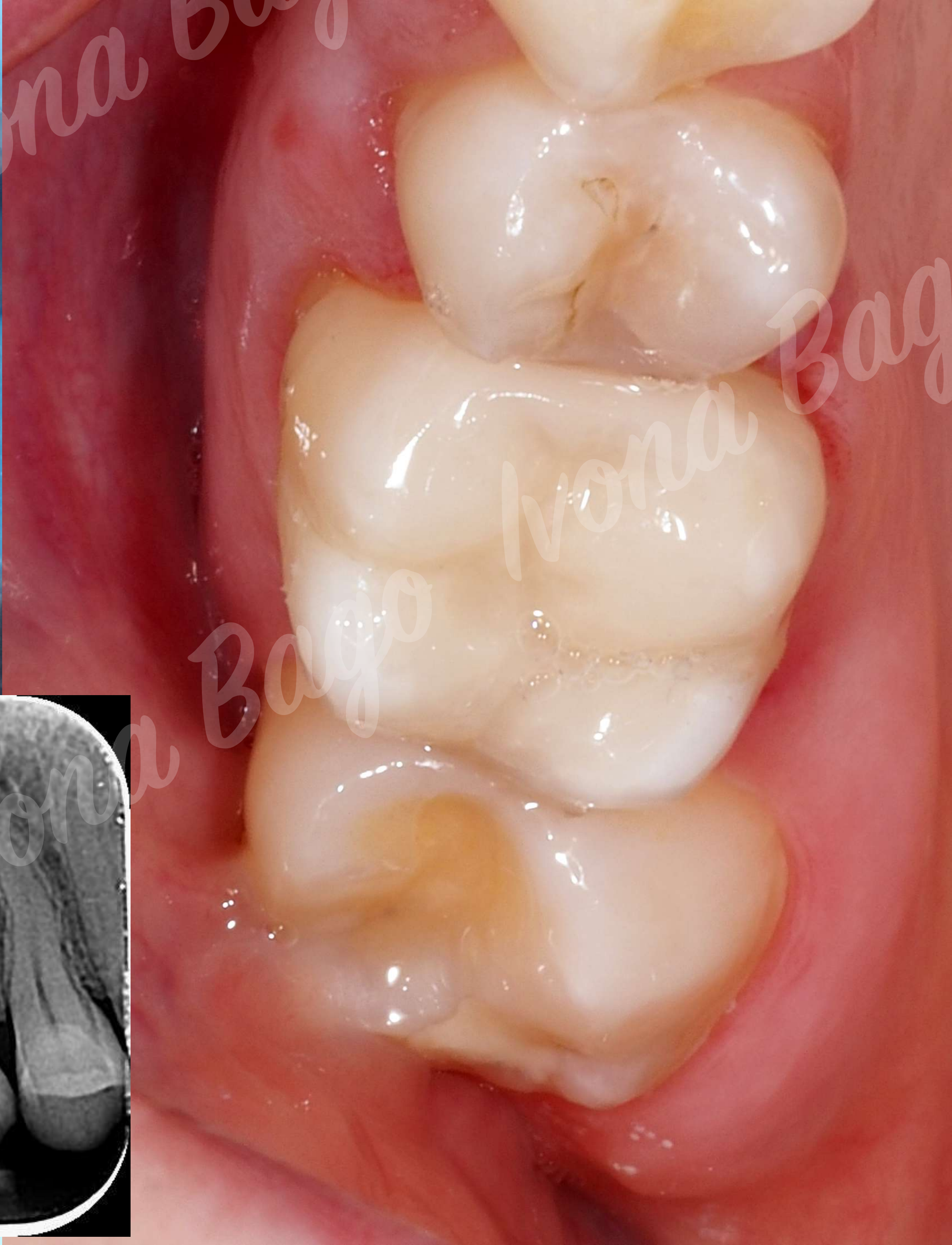
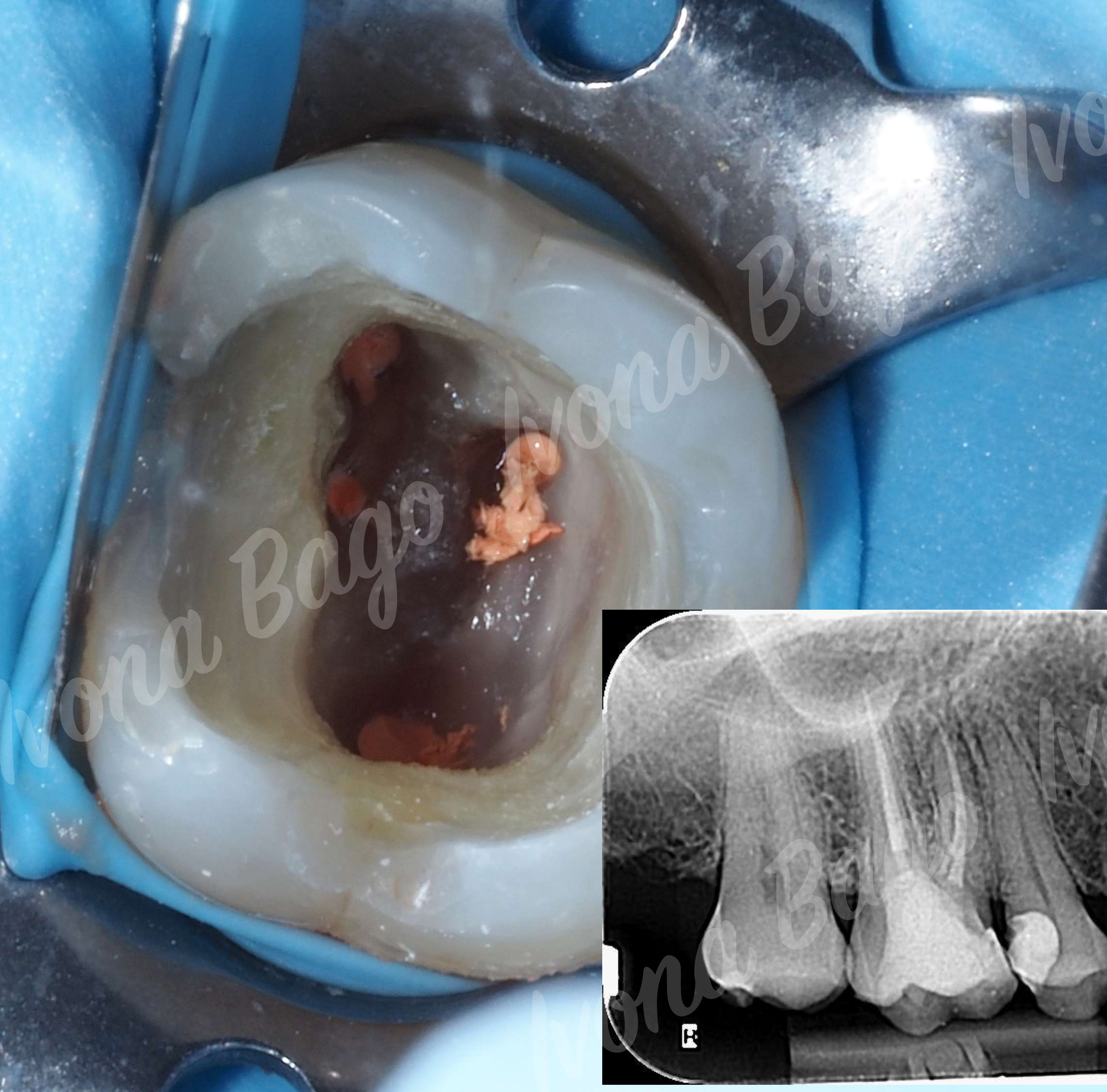
EDTA, 2 min

SWEEPS tehnika ispiranja kanala  
Er:YAG laser

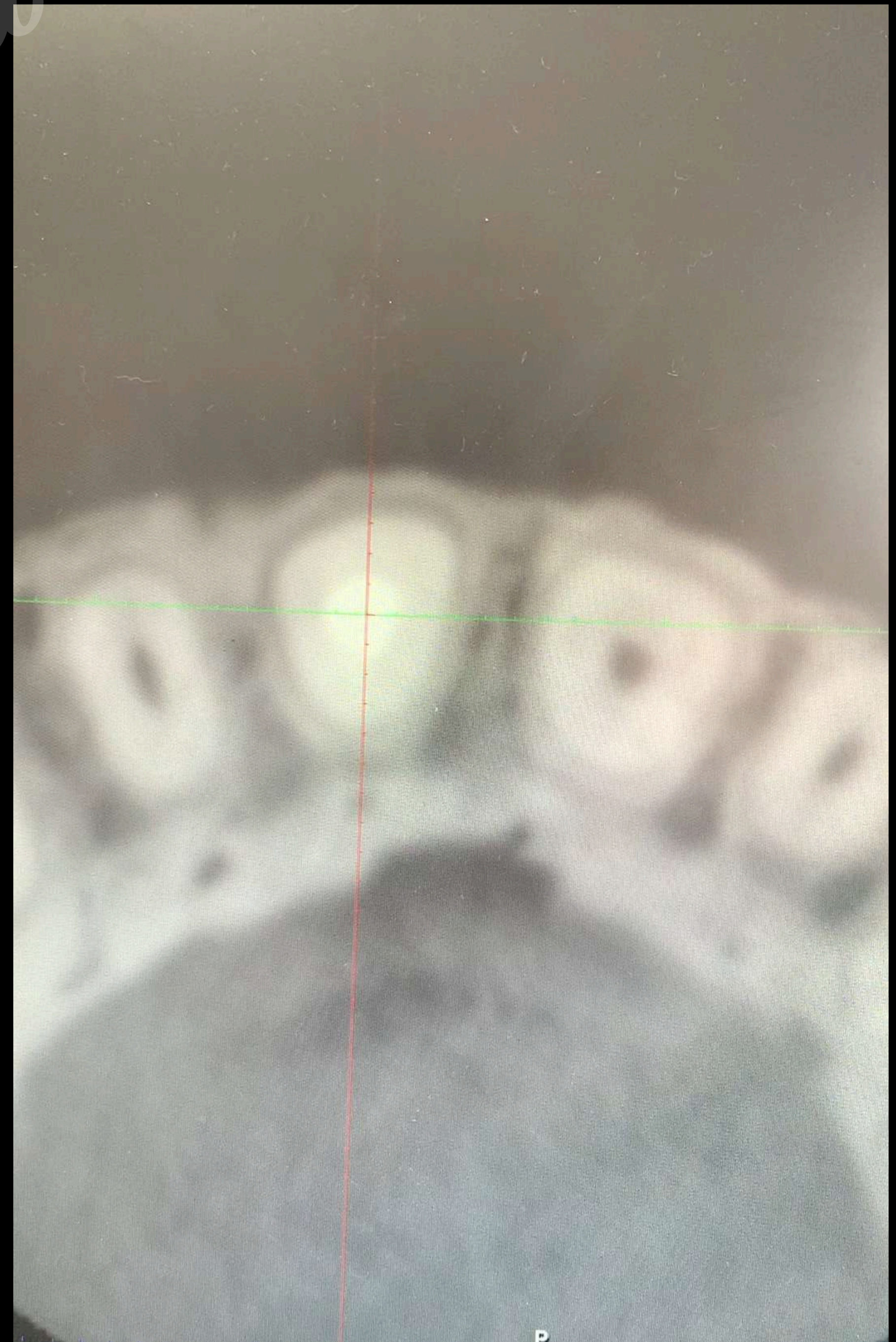
uklanjanje biofilma  
uklanjanje debrisa  
uklanjanje ostataka punila  
kalcificirani kanali



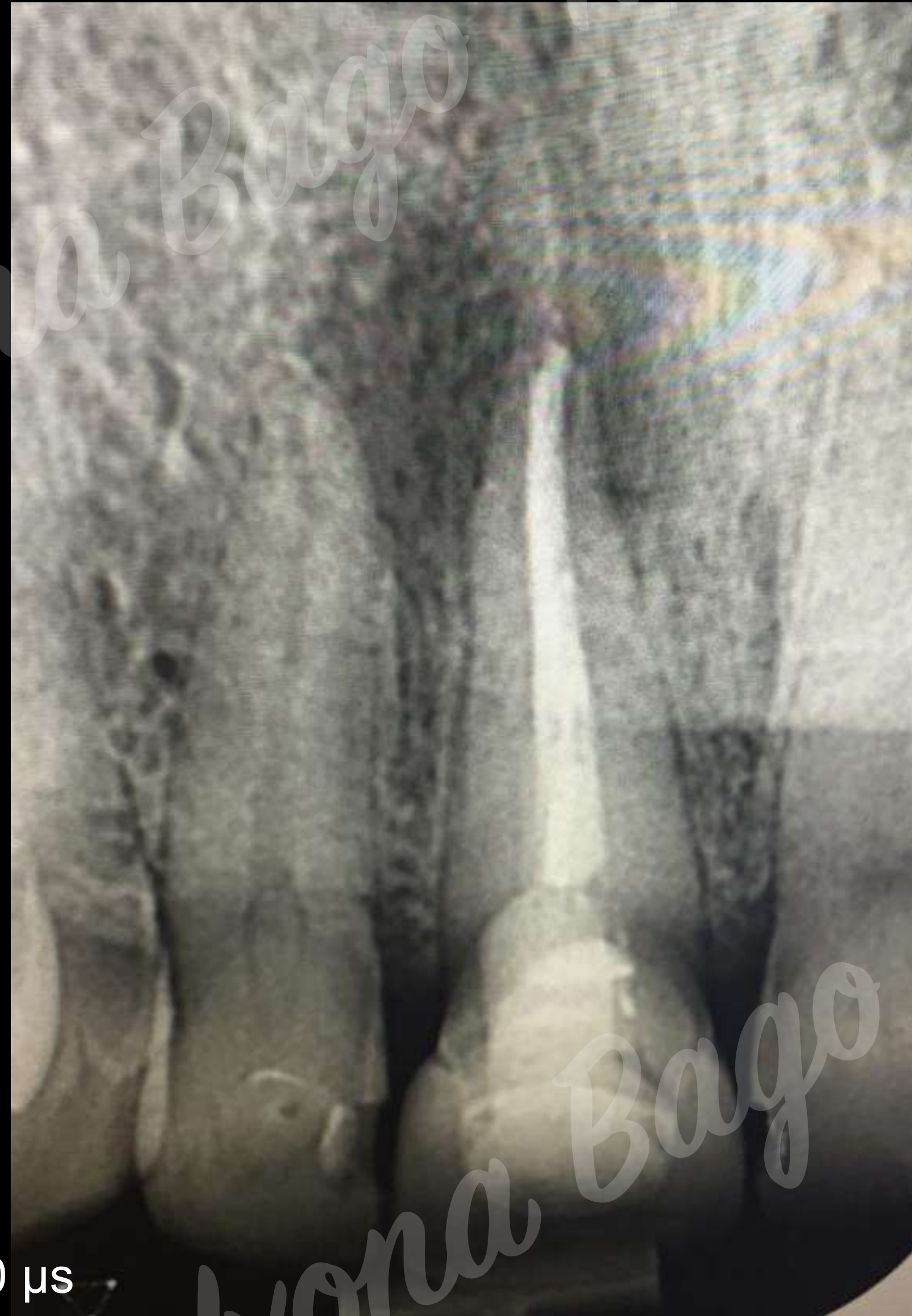
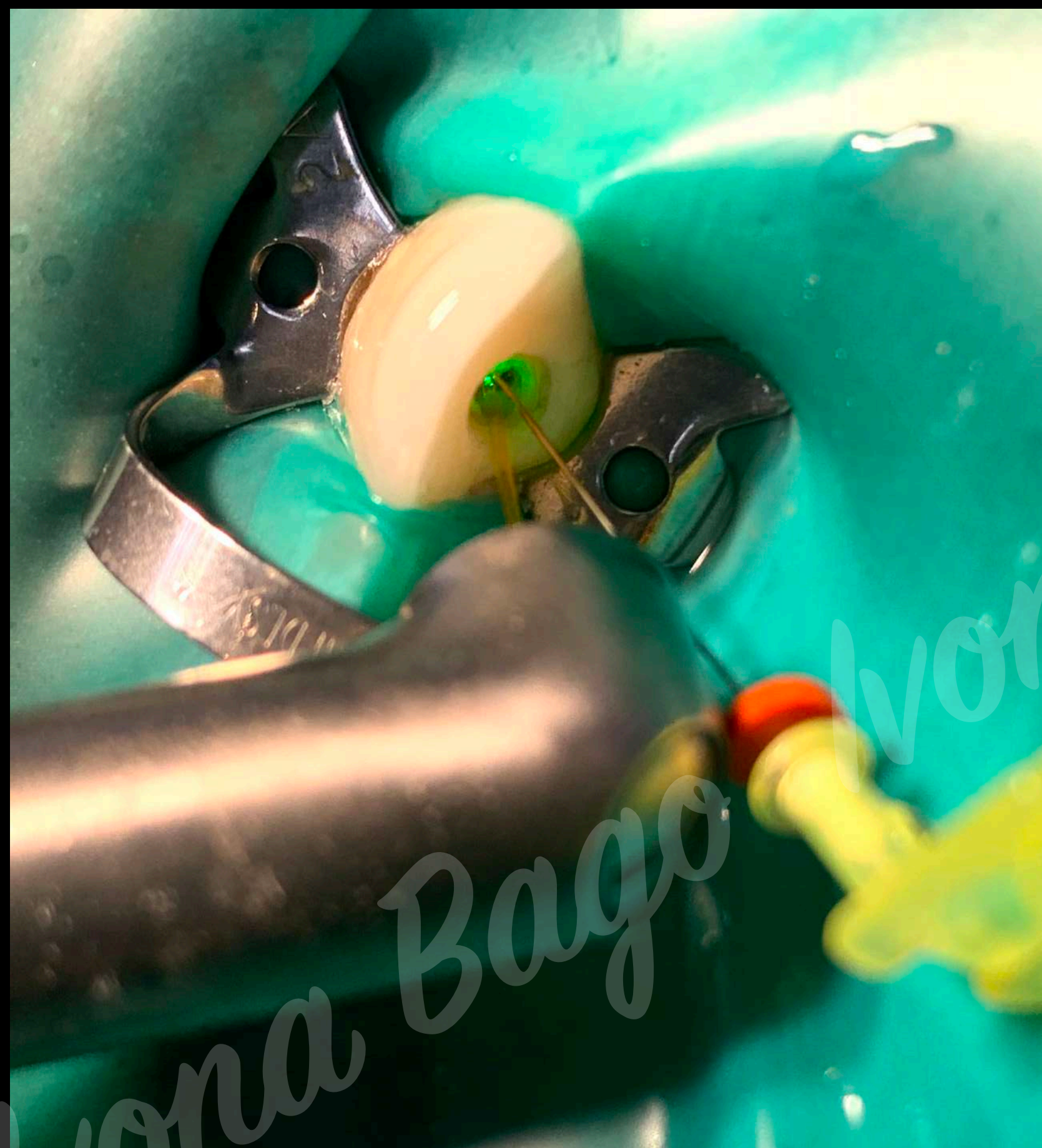
Ivona Bago



Akutní apikální absces 1.1.



# SWEEPS tehnika ispiranja kanala



AutoSWEEPS mod rada  
Razmak između dva pulsa od 300 – 650  $\mu$ s

**Nakon 12 mjeseci**







# SWEEPS tehnika ispiranja kanala

## Er:YAG laserska tehniologija

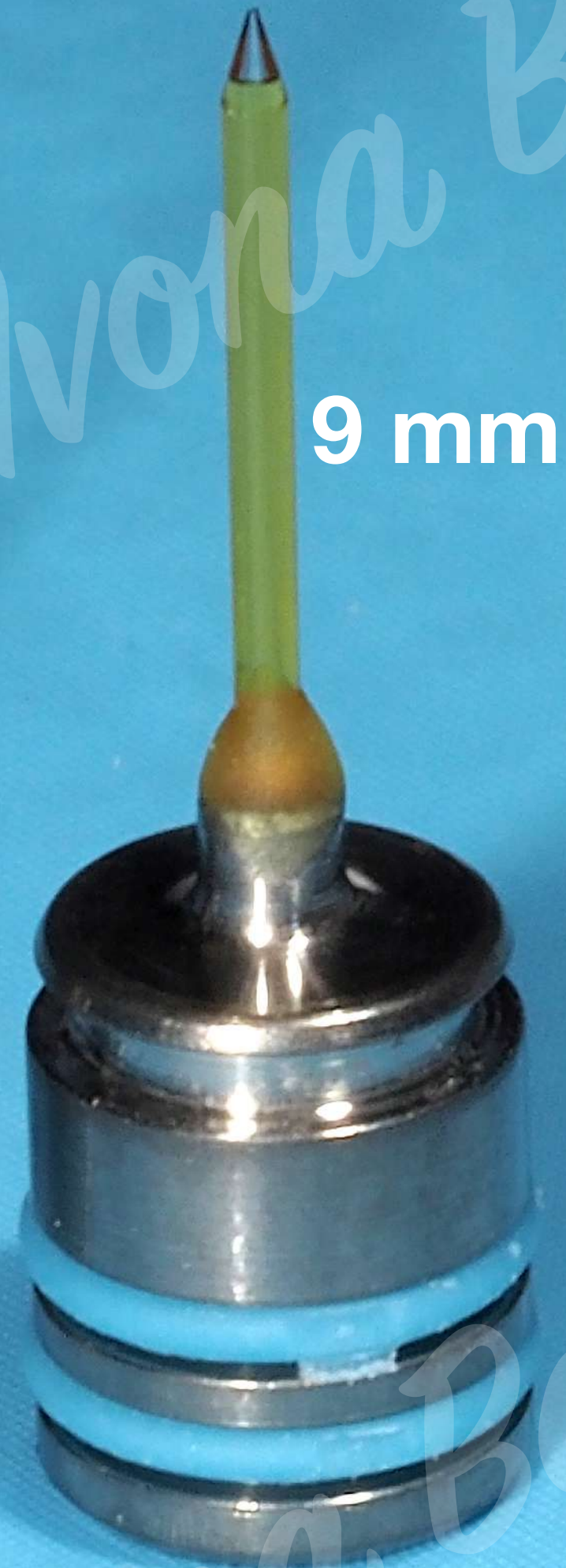


Laserski nastavci za SWEEPS tehniku

"RADIAL" ENDED TIP

14 mm

9 mm



400 microns tips

FLAT (VARIAN) TIP

